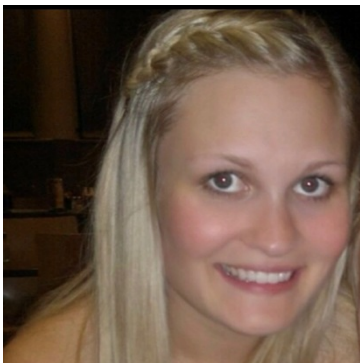


Baldivis Gardens Primary School Parent Board Members

Kirsty Lilley is the mother of a Kindergarten child with two other pre-school children still to come to our school. Kirsty has previously worked in Occupation Health and Safety and is currently studying Education. Kirsty was an active member of our Foundation Planning Committee. She is very interested in the governance of our school and is keen to ensure our school achieves the Vision set by the Planning Committee.



Kristie- Lee Last was also on our Planning Committee, works full time and is actively involved in community sport. She is the mother of two boys in Kindergarten and Year 2 and she is passionate about her children's education. She feels honoured to have been a part of the Planning Committee and is keen to remain involved in the governance of our new school.

Tinashe Magwaza is an engineer and has a strong passion for growth and continuous improvement. He has a strong drive to ensure that our children's future is directed and influenced in ways that will empower them with the skills that build responsible and competent leaders and world class innovators, who care for their society and environment. Tinashe was previously a Science Technology Engineering and Maths Ambassador in schools and universities in the United Kingdom. He has a Pre Primary boy and a baby girl and hopes his skills will promote col; between parents, teachers and the community



Sherrilee Fish is a mother of three children and two of her younger children are attending our school. Sherrilee is a Certified Book keeper and has run her own business from home. She believes school sets a good foundation for life and she wanted to ensure Baldivis Gardens provided that foundation and became a 'School of Excellence'. Sherrilee is very sad to leave our school and is grateful for the experience of being a Foundation Board member.